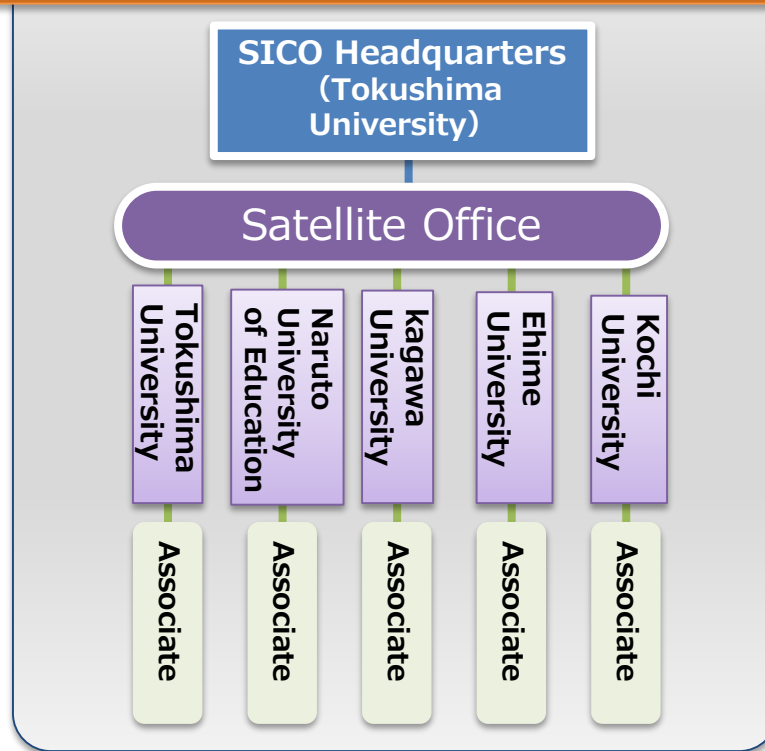


Progress Report on the Work of SICO

Overview of the Work of the SICO

Shikoku Innovative and Collaborative Organization for Industry, Academia and Government(SICO)



Techno Network Shikoku Co., Ltd. (Shikoku TLO)

Details of the Business of Shikoku TLO

Business concerning the Five National Universities in Shikoku

- Technology transfer (Evaluation and management of inventions)
- Acquisition of external funding
- Intellectual property management support
- Commercialization support

*Differs by university

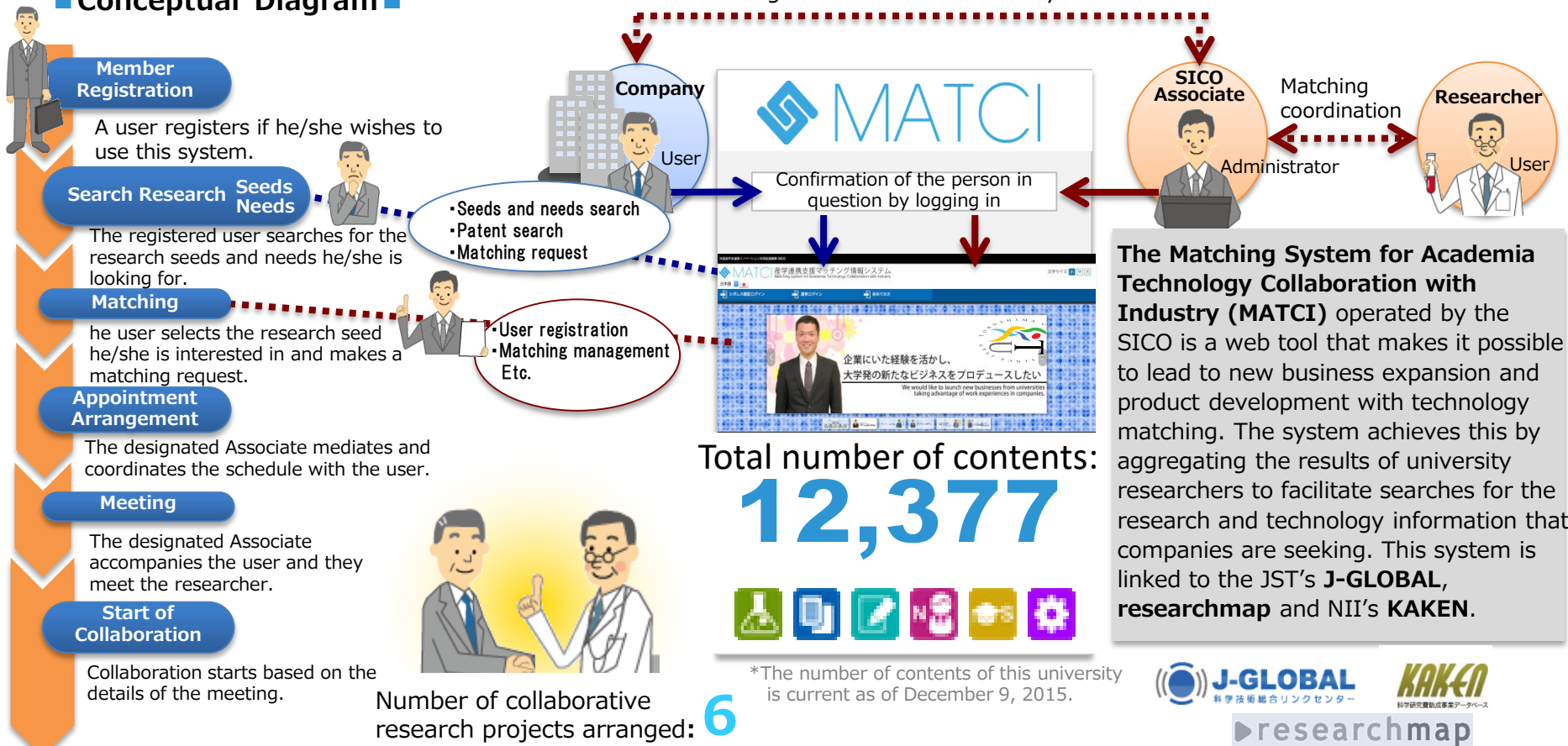
Details of the Work of the SICO

We will carry out the following in order to integrate and centralize the business common to the industry-academia-government collaboration department in the five national universities in Shikoku with the SICO.

- Develop the activity base of the SICO
- Integrate the business of SICO and Shikoku TLO
- Build and strengthen a collaborative structure between the SICO and each university

Matching System for Academia Technology Collaboration with Industry (MATCI)

Conceptual Diagram



The Associates in each university promote the use of this as a system to match the seeds of universities and the needs of companies to contribute to industry and academia collaborative activities.

(March 2014) Introduction of MATCI

(December 2014) Development and operation of an automatic information collection system

Matching System for Academia Technology Collaboration with Industry (MATCI)

MATCI Recoded Data Situation

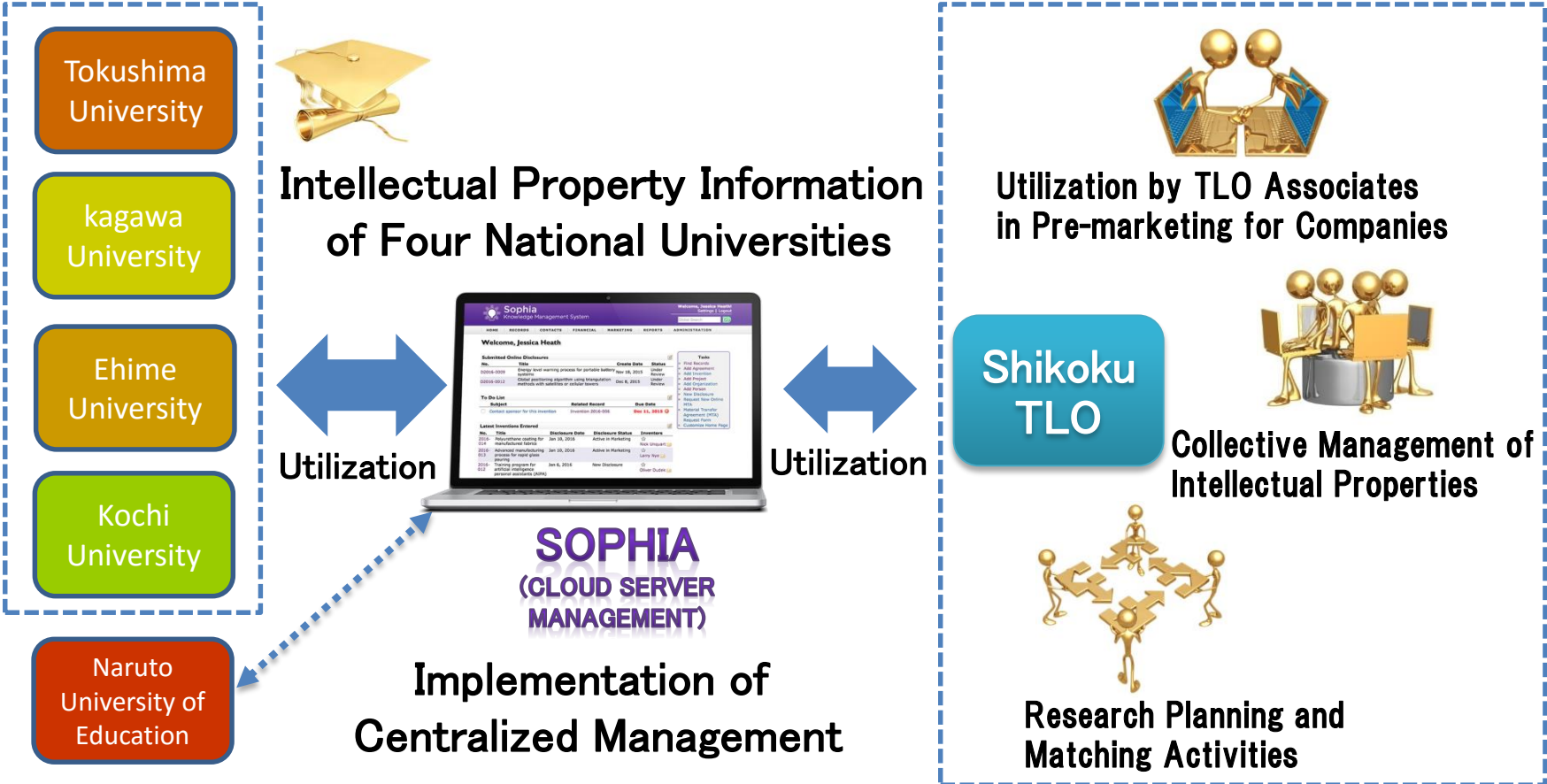
	Tokushima University	Naruto University of Education	kagawa University	Ehime University	Kochi University
Seeds	20	0	12	13	13
Patents	692	0	49	115	118
Literature (Papers)	2,260	139	491	563	381
Research (Grants-in-Aid for Scientific Research Data)	2,948	221	1,935	833	1,527
Common Equipment	31	0	0	0	0
Implementation Examples	16	0	0	0	0

(Current as of December 2015)

PR Situation (April to December, 2015)

- Talks at the 13th Annual Meeting of Japan Society for Intellectual Production (June 26)
 - Centralization of Information Management with the Intellectual Property Management System Aimed for by the SICO (Taichi Nagatomi)
 - Study of Cases Utilizing Scopus and SciVal in Prior Art Research (Hiroyuki Araki)
- Poster Presentations at the 1st Annual Conference of RMAN-J (September 1 and 2)
 - Overview of URA-specific Industry-Academia Collaborative Techniques Utilizing Researcher Information: Industry-Academia Collaboration Utilizing MATCI As a Researcher Database (Yuta Taniguchi and Hiroyuki Araki)
 - Introduction to MATCI That Can Be Utilized as a URA Researcher Information Database (Yuta Taniguchi and Hiroyuki Araki)
- Talk at the 1st Annual Conference of RMAN-J (September 2)
 - Building a Researcher Database As a URA Research Support Tool: Overview of the Acquisition of Researcher Information (Hiroyuki Araki)
- Invited Talk at the 1st Annual Conference of RMAN-J (September 2)
 - Introduction to MATCI (Hiroyuki Araki)
- Introduction at the Regional Collaborative Research Center Teachers Conference (September 3 and 4)
 - Introduction to MATCI (Taichi Nagatomi and Hiroyuki Araki)
- Exhibit and Demonstration at the Engineering Festival 2015 (September 8)
 - Overview of the Research Support and Industry-Academia Collaborative Activities at Tokushima University (Yuki Igawa and Yuta Taniguchi)
- Invited Talk at the Researchmap Symposium 2015 (September 16)
 - Overview of Examples of Initiatives toward Regional Revitalization and Industry-Academia Collaboration: Matching System for the Research Seeds and Research Needs Sought by Companies Utilizing Information Infrastructure (Hiroyuki Araki)
- Exhibit and Demonstration at Tokushima Business Challenge Messe 2015 (October 29 to 31)
 - Research Support and Industry-Government-Academia Collaborative Activities in Tokushima University (Yuki Igawa and Yuta Taniguchi)
- Poster Presentation at the Shikoku Open Innovation Workshop (November 10)
 - Promotion of Industry-Academia Collaboration Utilizing MATCI as a Researcher Database (Yuki Igawa and Yuta Taniguchi)

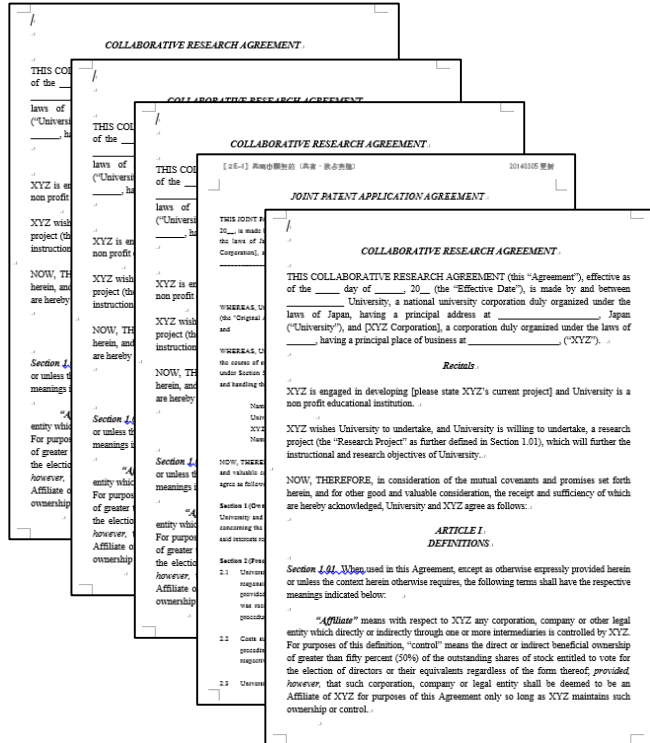
Intellectual Property Information Management Software: SOPHIA



We are hoping to introduce this system to collectively manage information relating to the intellectual properties managed separately by each university with the aim of improving the convenience of inputting information remotely and management through a cloud service. It will be possible to use this service in a wide range of activities (e.g. contracts and license revenue) in addition to intellectual property management. Therefore, we are looking to create new matching opportunities through efficient utilization by the centralized collection of information in the Shikoku region.

We set up a working group in January 2016 and are currently examining the operation of this.

Operation of a Common English Contract Model



Contract Number	English Contract Model (New)	
1	Joint Research Contract	
2	Joint Application Contract	Shared and Exclusive Implementation
3		Shared and Non-Exclusive Implementation
4		Shared and Priority Negotiation Period Setting
5	Shared Intellectual Property Rights Handling Agreement	Shared and Exclusive Implementation
6		Shared and Non-Exclusive Implementation

Report Number	English Contract Model (Operation Manual)	
1	Nondisclosure Agreement	Mutual
		University as Disclosing Party
		University as Receiving Party
2	Tangible Object Transfer Agreement	Biological Material
		Non-Biological Material
3	License Agreement	Research License Agreement
		Patent License Agreement
		Technology License Agreement
		License Option Agreement
4	Patent Transfer Agreement	Single Patent
		Plural Patent
5	Contract Research Agreement	

March 10, 2014

- We created and operated an English contract model common to the five universities
- We investigated/examined the precautions when using the existing English contract model and created an operation manual

July 12, 2014

- We held a briefing with Kazunori Yamagami – the lawyer we asked to draw up the model contract – for representatives from the five universities

Support for Local Companies in Collaboration with a Regional Bank

(Example of Implementation)

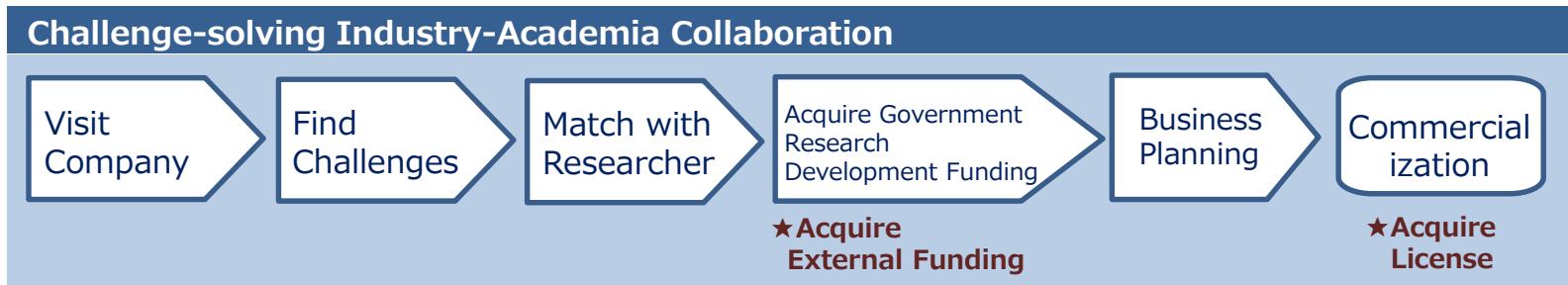
Tokushima University has entered into an agreement for cooperation with Awa Bank. This agreement aims to contribute to the development of the community and encourage industry by promoting regional industry-academia collaboration using the research technologies, information and expertise possessed by Tokushima University and Awa Bank.

The researchers at Tokushima University give research and technical guidance on the technological challenges facing the clients of Awa Bank to further strengthen the implementation of this collaborative activity.

■ Implementation of Challenge-solving Industry-Academia Collaboration Technique as an Industry-Academia Collaboration and Technology Activity in Tokushima University

Challenge-solving Industry-Academia Collaboration Technique

After finding the challenges of a local company and matching them to a researcher, we acquire government research development funding using the Awa Bank Network. We aim for commercialization through business construction.



(Reference) FY2014 Patent Right Licensing Income

(Unit: Thousand Yen)

No.	Institution Name	Amount of Revenue	Classification	Previous Fiscal Year No.
1	Kyoto University	357,568		2
2	University of Tokyo	341,184		1
3	Osaka University	138,014		3
4	Keio University	137,474	Private	14
5	Tohoku University	84,929		8
6	Nihon University	82,001	Private	4
7	Tokyo Institute of Technology	78,490		9
8	Kyushu University	51,619		6
9	Kanazawa University	35,987		13
10	Nagoya University	32,781		16
11	Tokushima University	32,220		-
12	Doshisha University	28,546	Private	25
13	Yokohama City University	20,381	Public	-
14	Hiroshima University	20,256		7
15	Hokkaido University	18,478		17

No.	Institution Name	Amount of Revenue	Classification	Previous Fiscal Year No.
16	University of Tsukuba	17,463		-
17	Tokyo Metropolitan	17,263	Public	-
18	Nagoya Institute of	16,992		-
19	Kumamoto University	16,919		26
20	University of Toyama	16,330		29
21	Shinshu University	14,408		-
22	Kobe University	14,345		22
23	Kagawa University	13,966		-
24	Kyushu Institute of	13,621		5
25	Ehime University	13,421		-
26	Nagasaki University	12,743		12
27	Kansai University	12,462	Private	-
28	Kanto Gakuin University	12,180	Private	10
29	Chiba University	12,043		23
30	Saitama Medical University	12,021	Private	19

*Reorganized from the Ministry of Education, Culture, Sports, Science and Technology's "Industry-Academia Collaboration Implementation Situation in Universities in FY2014"

*Includes the portion of foreign countries

Kochi University had licensing revenue of 108,020,000 yen – three times the amount compared to the previous fiscal year

Structure of Shikoku TLO

Position	Name
Representative Director	Takayuki Sakai (Tokushima University)
Director	Yosuke Ito (Naruto University of Education)
Director	Shoichi Gotani (Kagawa University)
Director	Shinfuku Nomura (Ehime University)
Director	Hiroyuki Ukeda (Kochi University)
Director	Kazuo Sakai (Shikoku Electric Power)

*From June 2015

- We have built a system in which it is possible to reflect the will of the universities in the operation of Techno Network Shikoku Co., Ltd. (Shikoku TLO) by electing officers to the board from the five national universities of Shikoku.

(Future Schedule)

1. Kazuo Sakai (Representative Director) will resign on March 31 (Deliberation at the Shikoku TLO Board of Directors on March 18)

(1) The succeeding Representative Director will be elected from among the current Directors at the Shikoku TLO's Board of Directors Meeting on March 18

(2) The succeeding Director from Tokushima University will be elected at the Shikoku TLO General Meeting of Shareholders in June

2. The term in office of Kazuo Sakai (Director) will continue until the Shikoku TLO General Meeting of Shareholders in June

SICO Work Process Chart

Details of Business	Second Phase Medium-term Targets and Plan Period				Third Phase Medium-term Targets and Plan Period	
	H24	H25	H26	H27 (This Fiscal Year)	H28	H29
1. Development of the SICO Activities Foundation						
Construction of a Collaborative Operation System for Business Integration and Work Management		→ (Review/Preparation)		→ (Implementation/Strengthening)		
2. Integration of the Business of the SICO and Shikoku TLO						
Construction of a Structure for Business Integration with Shikoku TLO		→ (Review/Preparation)			→ (Implementation)	
3. Construction and Strengthening of a Collaborative Structure with the SICO and Each University						
Information and PR Business						
Common Infrastructure System Construction, Operation and Implementation (e.g. Coordinated Activities, PR Activities to Companies and Expansion of Collaboration Destinations in Japan)		→ (Specifications Review/Design) and (Introduction)		→ (Operation)		
Overseas Expansion Activities (e.g. Technology Public Relations Activities, Wide Area Research Collaboration Promotion, Overseas Industry-Academia Collaboration Organization Observations and Participation in Overseas Technology Presentations)		→ (Review/Preparation/Implementation)				
Patent Application and Management Business Support Work						
Construction of a Patent Application and Management Business Integration Structure		→ (Review/Preparation)			→ (Implementation)	
Legal Support Business						
Creation of Standardized Contracts		→ (Review/Creation)		→ (Operation)		
Support for Each University (e.g. Legal Consultations, Risk Management and Information Sharing)			→ (Review/Preparation)		→ (Operation)	